



2 Hereford Road, London, E3

BUTLER & STAG



Immaculately presented one bedroom apartment situated within a modern gated development in vibrant Bow.



- Modern One Bedroom Apartment
- Secure Gated Development
- Third Floor with a Lift
- Open-Plan Living Space / Kitchen
- Sought-After Bow Location
- Close to Transport Links & Victoria Park
- Furnished
- Available from 4th July 2026

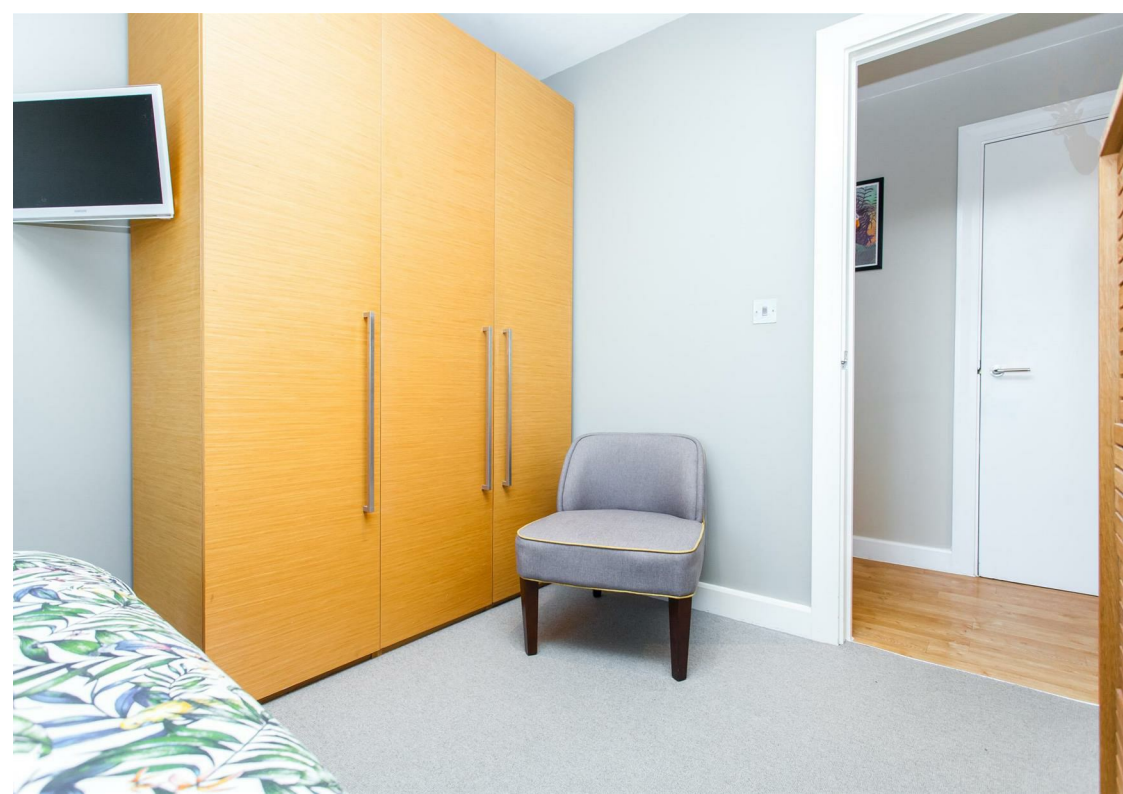
Positioned on the third floor of this secure and well-maintained block with a lift, the location offers easy access to a range of amenities on Roman Road, the wonderful Victoria Park and excellent transport links, including Bow Road and Mile End underground stations.

The apartment itself measures just under 600 Sq/Ft and features a welcoming living and dining space, open-plan to a recessed kitchen, a generous double bedroom, contemporary shower room and a large hallway storage cupboard.

Perfectly suited to a single professional or couple, this furnished property is available from 4th July 2026.

EPC Rating D
Council Tax Band C

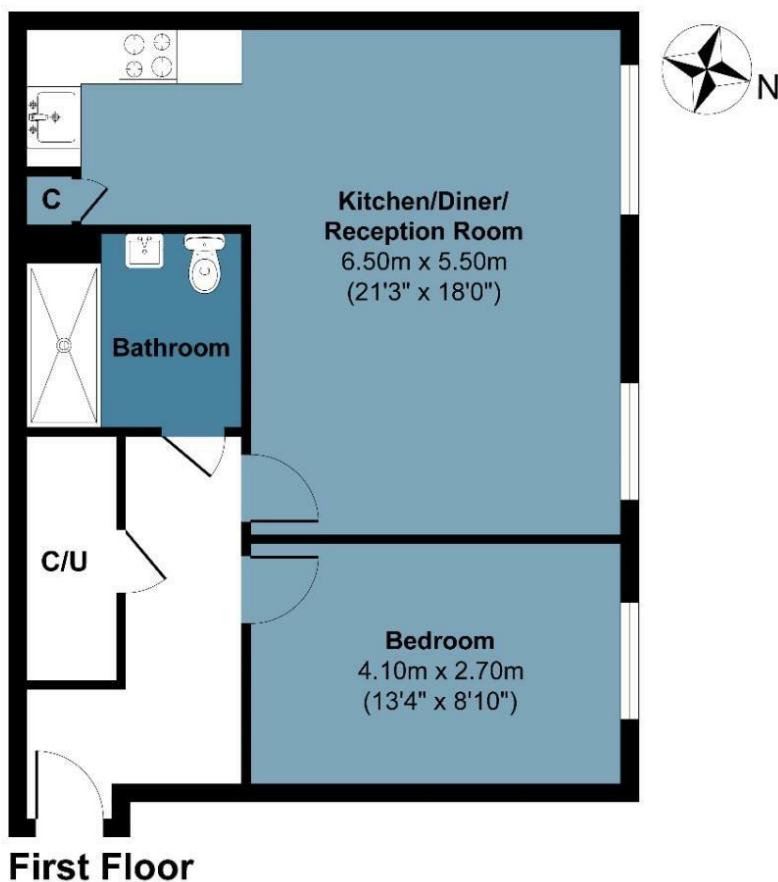




Hereford Road E3

Approx. Gross Internal Area 54.0 sq M (578 sq Ft)

BUTLER & STAG



Measurements are approximate and for illustration purposes only, while we do not doubt the accuracy and completeness, we advise you conduct independent assessment of the property to determine monetary value.
© @ modephotouk www.modephoto.co.uk

BUTLER & STAG

☎ 020 8102 1236

🏠 508 Roman Road, Bow, London, E3 5LU

✉ bow@butlerandstag.com

www.butlerandstag.uk

IMPORTANT NOTICE - These particulars have been prepared in good faith and they are not intended to constitute part of an offer or contract. We have not performed a structural survey on this property and the services, appliances and specific fittings have not been tested. All photographs, measurements, floor plans and distances referred to are given as a guide and should not be relied upon.